

Important

Your needs and those of your family should be the primary factors considered when determining the timing of your evacuation. Do not delay your departure in anticipation of future help from emergency services providers. All citizens should prepare a plan well in advance of any evacuation.

The following steps are recommended:

- Assemble your disaster supplies kit with items such as flashlights, cell phones, extra batteries, battery chargers, portable radio, first aid kit, emergency water and food, medical supplies, non-electric can opener, highway map, important documents such as insurance and medical information, etc.
- Secure your home against disaster to help reduce damages. Lock windows and doors, Secure or put up any loose objects from around your home.
- If you cannot take your pet(s) with you, make provisions for them.
- Know your area's evacuation plan/routes before you leave home.
- Fill your vehicle with gas as early as possible. Take only the vehicle necessary to transport you and your family to safety. Extra vehicles create congestion.
- Bring extra cash in case banks are closed and ATMs are not working.
- Notify family and friends (especially those out of the area) of your plan and your destination.
- Develop an emergency plan in case family members are separated. Instruct all evacuating family members of the name and contact information of your designated out-of-area friend or family.
- Ensure children know how and when to call 911.
- Evacuate, traveling safely to your destination.
- Expect travel times to destinations to be significantly longer than normal.

Continually listen to local officials for information on returning home.

Fender-Bender?

State law requires motorists to move fender-bender accidents out of the travel lanes to the shoulder of the road. To keep all travel lanes and shoulders clear, however, disabled vehicles on the shoulder may be relocated to the next exit ramp where further assistance may be available. Call *SP on your cellular should you need assistance.

Additional Information

More information on emergency preparedness and evacuation safety is available from the following:

Emergency Alert System/NOAA All-Hazard Radio:
Tune to your local radio station

Community Support:
304-744-OTHER (304-744-6483)

WV Department of Transportation:
www.transportation.wv.gov
1-877-WV ROAD (1-877-982-7623)

WV Division of Homeland Security & Emergency Management:
www.wvdhsem.gov

Kanawha County:
www.kanawha.us

Metro 911:
www.metro911.org

City of Charleston:
www.cityofcharleston.org

Kanawha Putnam Emergency Planning Committee
www.kpepc.org

American Red Cross:
www.redcross.org

KANAWHA COUNTY EVACUATION PLAN

Resident Evacuation Instructions



Emergency Evacuation Information—Kanawha Northeast Area

ADVISORY



Kanawha Northeast Area to Points North

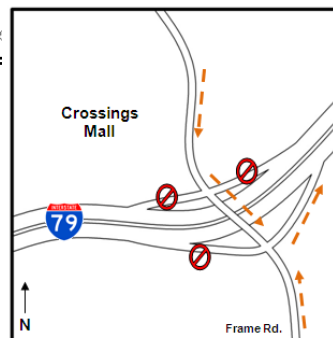
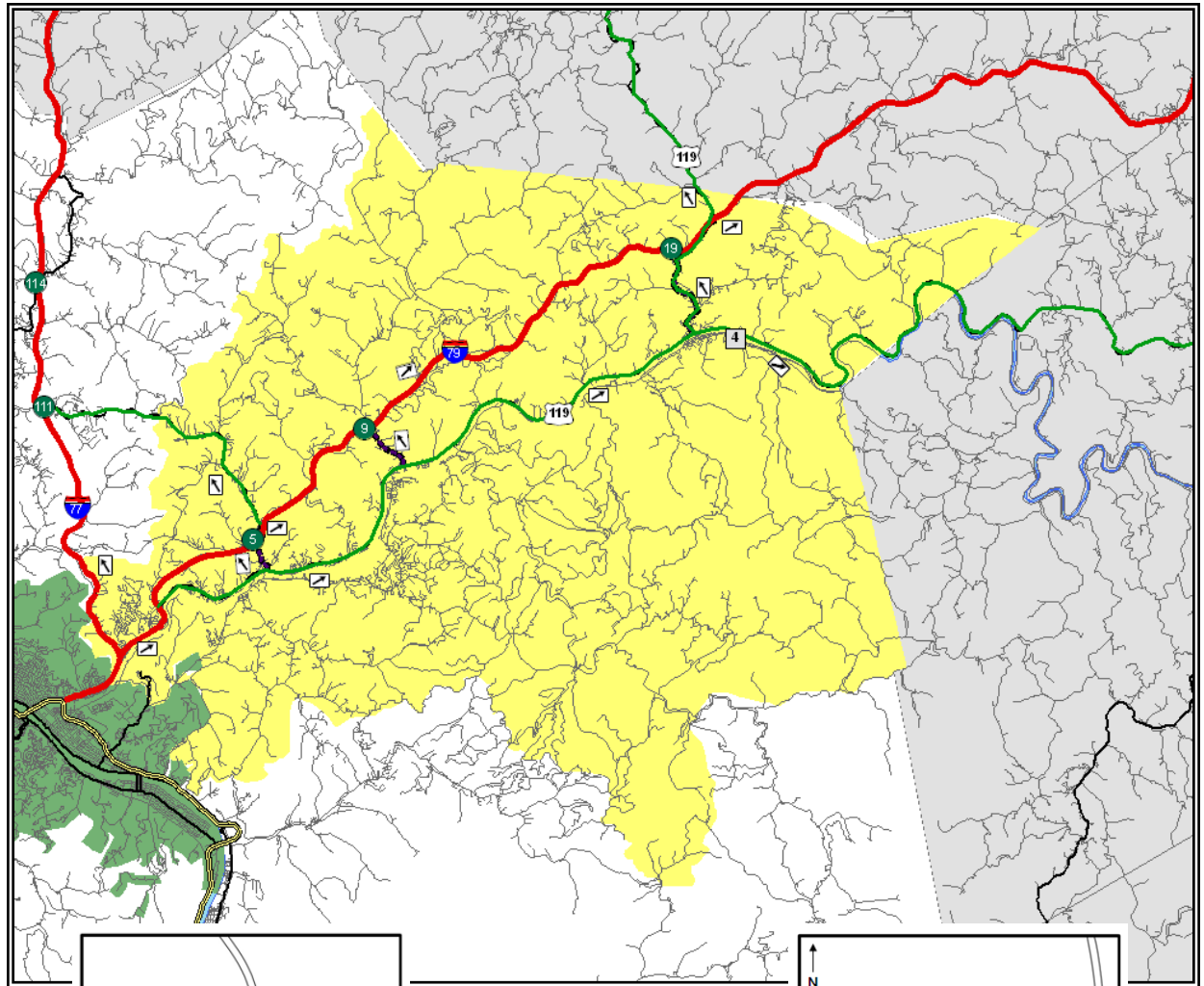
WHO...This plan will affect residents and motorists evacuating from the northern portions of Kanawha County, including Clendenin, Big Chimney, Blue Creek, Coco, Coopers Creek, Crede, Crestwood, Dutch Ridge, Elkview, Frame, Little Sandy, Milliken, Mink Shoals, Newhouse Branch, Pentacre, Pinch., Pinch Ridge, Quick, Rutledge, Sanderson, and Walgrove

WHY...To help move citizens safely and efficiently out of harm's way during large-scale emergencies necessitating evacuation.

WHAT...If this plan is activated, the primary evacuation route from these areas is I-79 NORTH. If transportation assistance is needed, report to the nearest KRT stop.

WHEN...This type of evacuation should be considered only when the area is threatened by a large-scale emergency and evacuation orders have been issued.

WHERE...Evacuating residents should access I-79 at Exits 9 and 19. If I-79 is unavailable, residents will be directed to evacuate US 119 northward.



Exit 9

Exit 19

